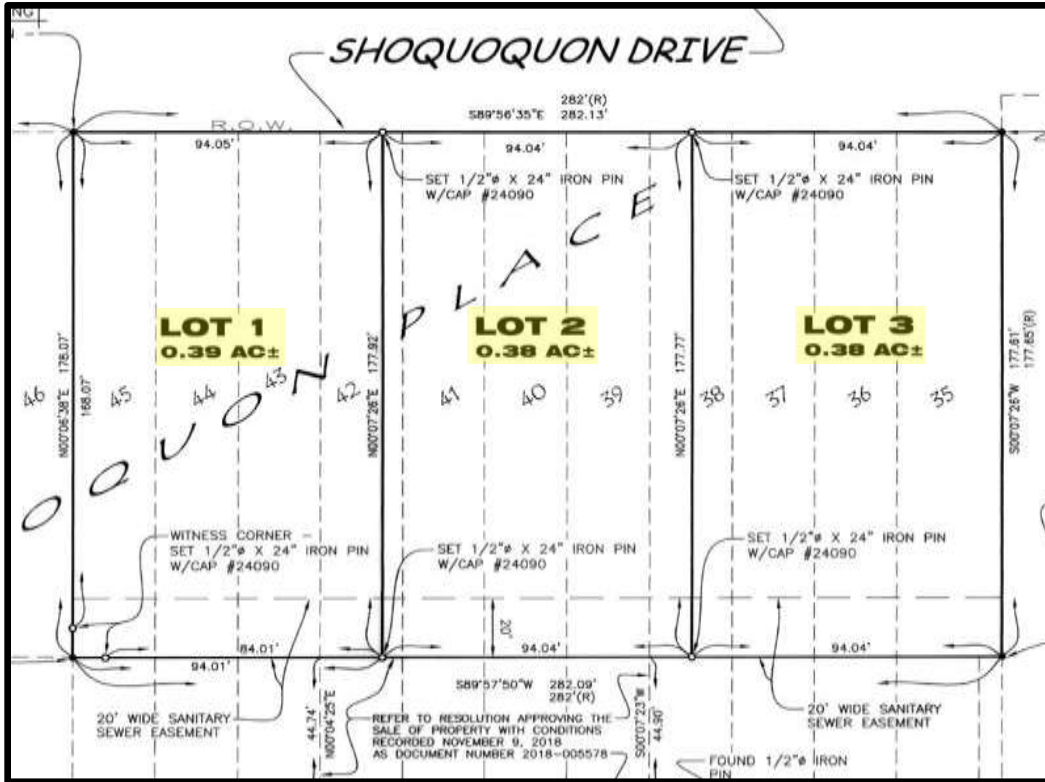




Lots For Sale

*Park View Subdivision
Located next to Dankwardt Park*



Property Summary:

- Three (3) Lots Available in **Park View Subdivision** - Lot Size: 94' x 178'
- 20' wide sanitary sewer easement at south end of property

Property Covenants:

- Construction of a single-family residential home must start within 12 months of purchase and be completed in 24 months
- Home must include an attached two-car garage and a concrete driveway
- Home must contain at least 1,250 square feet of living space on the main floor, separate from space of garage
- Owner of each vacant or unimproved lot must keep the same in a clean/neat condition and must keep lot mowed and free from weeds/debris

Lots will be sold auction style to the highest bidder at a City Council meeting and require a minimum bid of \$30,000.

DATE OF SALE will be determined after initial bid has been placed with the city. Property sale will be conducted auction-style at a City Council meeting (1st/3rd Monday at 5:30 PM).

See City website www.burlingtoniowa.org or Community Development Department for details and bid form.